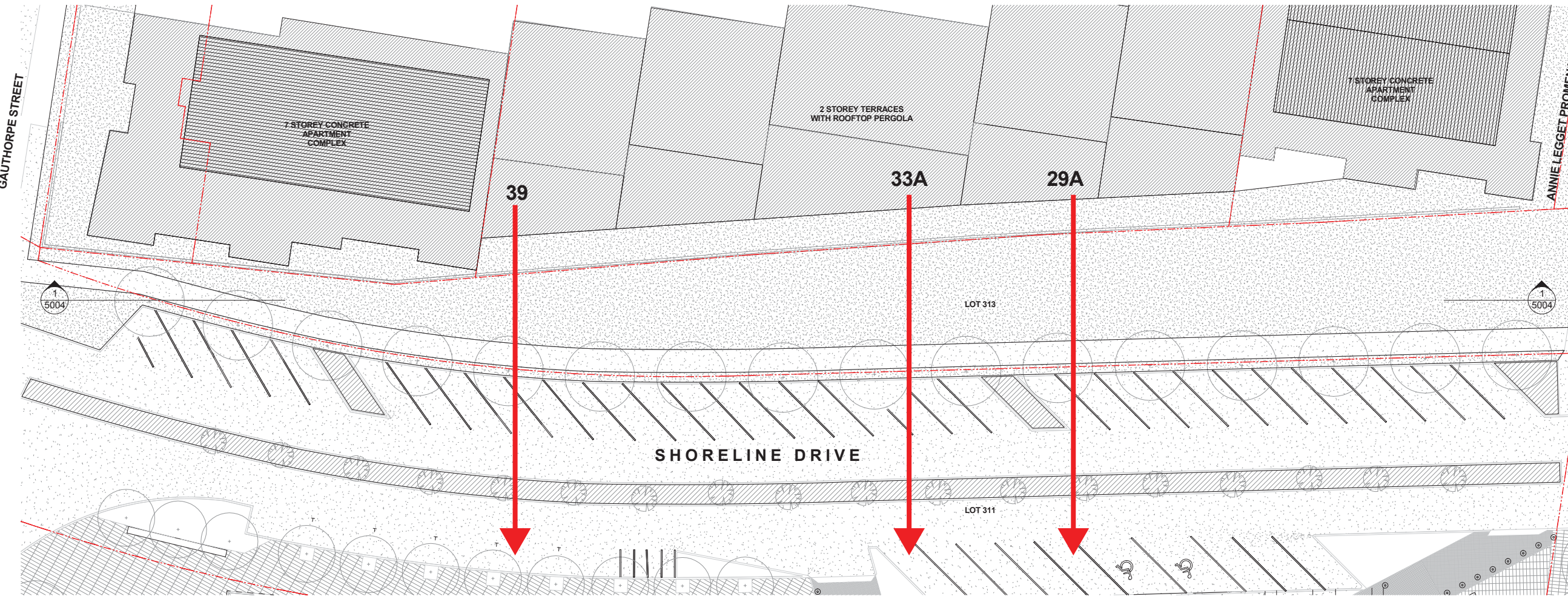


VIEW ANALYSIS - KEY ELEVATION
SCALE 1 : 200



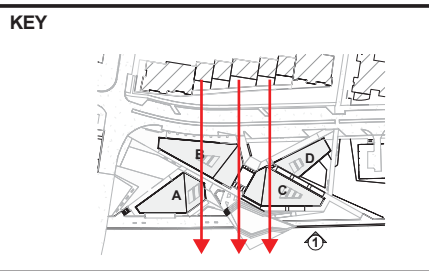
VIEW ANALYSIS - KEY PLAN
SCALE 1 : 200

COMMUNITY FACILITIES SITE

Notes
All dimensions and setbacks to be verified prior to commencement, omissions or discrepancies to be notified to the architect.
Copyright
The copyright of this drawing together with any other documents prepared by crone partners architecture studios. pty ltd (cp) remains the property of cp. crone partners grants licence for the use of this document for the purpose for which they are intended. The licence is not transferable without the permission of cp.

Quality Assurance System

Authorised By: Date: 02.11.14



Rev	DESCRIPTION	By	Date

Client

Structural Engineer TAYLOR THOMSON WHITTING Level 3, 48 Chandos Street, St Leonards NSW 2065 Ph: (+612) 94397288	Service Consultant WOOD AND GRIEVE ENGINEERS L6, Building B, 207 Pacific Highway, St Leonards, New South Wales, 2065 Ph: (+612) 94847000
ESD Consultant CRONE PARTNERS Level 2, 364 Kent Street Sydney, NSW 2000 Ph: (+612) 8295 5300	Landscape Architect URBIS Tower 2, Level 23, Darling Park, 201 Sussex St. Sydney, NSW 2000 Ph: (+612) 8233 9900
Civil Engineer TAYLOR THOMSON WHITTING Level 3, 48 Chandos Street, St Leonards NSW 2065 Ph: (+612) 94397288	BCA Consultant CITY PLAN SERVICES Level 1, 364 Kent Street, Sydney, NSW 2000 Ph: (+612) 8270 3500
Cost Consultant MITCHELL BRANDTMAN Unit 10, 15 - 23 Kumulla Rd Miranda, NSW 2228 Ph: (+612) 95418000	Planning Consultant URBIS Tower 2, Level 23, Darling Park, 201 Sussex St. Sydney, NSW 2000 Ph: (+612) 8233 9900

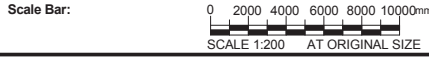
Architect

Crone Partners
level 2, 364 kent street,
sydney, nsw 2000, australia
Ph: +61 2 8295 5300
Fax: +61 2 8295 5301

Project
RHODES COMMUNITY FACILITIES AND RESTAURANT
30 Shoreline Drive, Rhodes 2138

Drawn: AH | Checked: AD | Date: 02/11/14 | Scale As indicated

Drawing Title
VIEW CORRIDOR ANALYSIS



DEVELOPMENT APPLICATION

CA 3138 for discussion
Project no. Drawing Phase. Drawing No. Rev



Existing Condition



Proposed Condition

Notes

All dimensions and setouts to be verified prior to commencement, omissions or discrepancies to be notified to the architect.

Copyright

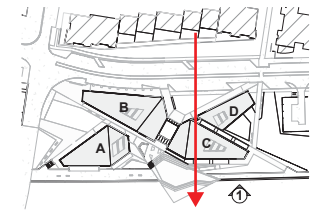
The copyright of this drawing together with any other documents prepared by crone partners architecture studios. pty ltd (cp) remains the property of cp. crone partners grants licence for the use of this document for the purpose for which they are intended. The licence is not transferable without the permission of cp.

Quality Assurance System

Authorised By: AD

Date: 02.11.14

KEY



Description:

View looking West to Homebush Bay from Ground of apartment 29A
Shoreline Drive (previously known as 10-16 Marquet Street)

Disclaimer:

This is a simulated montage of likely view impacts from the property numbers indicated on each sheet. The views are based on photographic and 3D digital model information and are intended to give an impression of the scale and massing of the proposed Community Facilities. Crone Partners accept no responsibility for the accuracy of these images. The images have been prepared to indicate scale and mass but do not show proposed future roadworks or accurate landscape design/species or building and public domain materiality.

Rev	DESCRIPTION	By	Date
-----	-------------	----	------

Client



<p>Structural Engineer TYLOR THOMSON WHITTING Level 3, 48 Chandos Street, St Leonards NSW 2065 Ph: (+612) 94307286</p>	<p>Service Consultant WOOD AND GRIEVE ENGINEERS L6, Building B, 207 Pacific Highway, St Leonards, New South Wales, 2065 Ph: (+612) 94847000</p>
<p>ESD Consultant CRONE PARTNERS Level 2, 364 Kent Street, Sydney, NSW 2000 Ph: (+612) 8295 5300</p>	<p>Landscape Architect URBIS Tower 2, Level 23, Darling Park, 201 Sussex St, Sydney, NSW 2000 Ph: (+612) 8233 9900</p>
<p>Civil Engineer TYLOR THOMSON WHITTING Level 3, 48 Chandos Street, St Leonards NSW 2065 Ph: (+612) 94307286</p>	<p>BCA Consultant CITY PLAN SERVICES Level 1, 364 Kent Street, Sydney, NSW 2000 Ph: (+612) 8270 3550</p>
<p>Cost Consultant MITCHELL BRANDTMAN Unit 10, 15-23 Kumalla Rd Miranda, NSW 2228 Ph: (+612) 95418000</p>	<p>Planning Consultant URBIS Tower 2, Level 23, Darling Park, 201 Sussex St, Sydney, NSW 2000 Ph: (+612) 8233 9900</p>

Architect

cronepartners

Crone Partners
level 2, 364 kent street,
sydney, nsw 2000, australia
Ph: +61 2 8295 5300
Fax: +61 2 8295 5301

Project	
---------	--

RHODES COMMUNITY FACILITIES AND RESTAURANT

30 Shoreline Drive, Rhodes 2138

Drawn: AD	Checked: AD	Date: 02/11/14	Scale As indicated
-----------	-------------	----------------	--------------------

Drawing Title	
---------------	--

VIEW IMPACT ASSESSMENT
Ground Floor - 29A Shoreline Drive

Scale Bar: NTS

DEVELOPMENT APPLICATION

CA 3138	for discussion		
Project no.	Drawing Phase.	Drawing No.	Rev



Existing Condition



Proposed Condition

Notes

All dimensions and setbacks to be verified prior to commencement, omissions or discrepancies to be notified to the architect.

Copyright

The copyright of this drawing together with any other documents prepared by crone partners architecture studios. pty ltd (cp) remains the property of cp. crone partners grants licence for the use of this document for the purpose for which they are intended. The licence is not transferable without the permission of cp.

Quality Assurance System

Authorised By: AD

Date: 02.11.14

KEY

Description:

View looking West to Homebush Bay from Level 1 of apartment 29A Shoreline Drive (previously known as 10-16 Marquet Street)

Disclaimer:

This is a simulated montage of likely view impacts from the property numbers indicated on each sheet. The views are based on photographic and 3D digital model information and are intended to give an impression of the scale and massing of the proposed Community Facilities. Crone Partners accept no responsibility for the accuracy of these images. The images have been prepared to indicate scale and mass but do not show proposed future roadworks or accurate landscape design/species or building and public domain materiality.

Rev	DESCRIPTION	By	Date

Client

<div>Structural Engineer</div> <div>TAYLOR THOMSON WHITTING</div> <div>Level 3, 48 Chandos Street,</div> <div>St Leonards NSW 2065</div> <div>Ph: (+612) 94397288</div>	<div>Service Consultant</div> <div>WOOD AND GRIEVE ENGINEERS</div> <div>L6, Building B, 207 Pacific Highway,</div> <div>St Leonards, New South Wales, 2065</div> <div>Ph: (+612) 84847000</div>
<div>ESD Consultant</div> <div>CRONE PARTNERS</div> <div>Level 2, 364 Kent Street Sydney,</div> <div>NSW 2000</div> <div>Ph: (+612) 8295 5300</div>	<div>Landscape Architect</div> <div>URBIS</div> <div>Tower 2, Level 23, Darling Park,</div> <div>201 Sussex St, Sydney, NSW 2000</div> <div>Ph: (+612) 8233 9900</div>
<div>Civil Engineer</div> <div>TAYLOR THOMSON WHITTING</div> <div>Level 3, 48 Chandos Street,</div> <div>St Leonards NSW 2065</div> <div>Ph: (+612) 94397288</div>	<div>BCA Consultant</div> <div>CITY PLAN SERVICES</div> <div>Level 1, 364 Kent Street,</div> <div>Sydney, NSW 2000</div> <div>Ph: (+612) 8270 3500</div>
<div>Cost Consultant</div> <div>MITCHELL BRANDTMAN</div> <div>Unit 10, 15-23 Kumulla Rd</div> <div>Miranda, NSW 2228</div> <div>Ph: (+612) 95418000</div>	<div>Planning Consultant</div> <div>URBIS</div> <div>Tower 2, Level 23, Darling Park,</div> <div>201 Sussex St, Sydney, NSW 2000</div> <div>Ph: (+612) 8233 9900</div>

Architect

cronepartners

Crone Partners

level 2, 364 Kent street,

sydney, nsw 2000, australia

Ph: +61 2 8295 5300

Fax: +61 2 8295 5301

Project

RHODES COMMUNITY FACILITIES AND RESTAURANT

30 Shoreline Drive, Rhodes 2138

Drawn: AD

Checked: AD

Date: 02/11/14

Scale As indicated

Drawing Title

VIEW IMPACT ASSESMENT

Level 1 - 29A Shoreline Drive

Scale Bar: NTS

DEVELOPMENT APPLICATION

CA 3138

for discussion

Project no.

Drawing Phase.

Drawing No.

Rev



Existing Condition



Proposed Condition

Notes
All dimensions and setbacks to be verified prior to commencement, omissions or discrepancies to be notified to the architect.

Copyright
The copyright of this drawing together with any other documents prepared by crone partners architecture studios. pty ltd (cp) remains the property of cp. crone partners grants licence for the use of this document for the purpose for which they are intended. The licence is not transferable without the permission of cp.

Quality Assurance System

Authorised By: ADDate: 02.11.14

KEY

Description:
View looking West to Homebush Bay from Level 2 of apartment 29A Shoreline Drive (previously known as 10-16 Marquet Street)

Disclaimer:
This is a simulated montage of likely view impacts from the property numbers indicated on each sheet. The views are based on photographic and 3D digital model information and are intended to give an impression of the scale and massing of the proposed Community Facilities. Crone Partners accept no responsibility for the accuracy of these images. The images have been prepared to indicate scale and mass but do not show proposed future roadworks or accurate landscape design/species or building and public domain materiality.

Rev	DESCRIPTION	By	Date
Client			
Structural Engineer TAYLOR THOMSON WHITTING Level 3, 48 Chandos Street, St Leonards NSW 2065 Ph: (+612) 94397288		Service Consultant WOOD AND GRIEVE ENGINEERS L6, Building B, 207 Pacific Highway, St Leonards, New South Wales, 2065 Ph: (+612) 94847000	
ESD Consultant CRONE PARTNERS Level 2, 364 Kent Street Sydney, NSW 2000 Ph: (+612) 8295 5300		Landscape Architect URBIS Tower 2, Level 23, Darling Park, 201 Sussex St, Sydney, NSW 2000 Ph: (+612) 8233 9900	
Civil Engineer TAYLOR THOMSON WHITTING Level 3, 48 Chandos Street, St Leonards NSW 2065 Ph: (+612) 94397288		BCA Consultant CITY PLAN SERVICES Level 1, 364 Kent Street, Sydney, NSW 2000 Ph: (+612) 8270 3500	
Cost Consultant MITCHELL BRANDTMAN Unit 10, 15-23 Kumulla Rd Miranda, NSW 2228 Ph: (+612) 95418000		Planning Consultant URBIS Tower 2, Level 23, Darling Park, 201 Sussex St, Sydney, NSW 2000 Ph: (+612) 8233 9900	
Architect cronepartners Crone Partners level 2, 364 kent street, sydney, nsw 2000, australia Ph: +61 2 8295 5300 Fax: +61 2 8295 5301			
Project RHODES COMMUNITY FACILITIES AND RESTAURANT 30 Shoreline Drive, Rhodes 2138			
Drawn: AD		Checked: AD	Date: 02/11/14
Scale As indicated			
Drawing Title VIEW IMPACT ASSESMENT Level 2 - 29A Shoreline Drive			
Scale Bar: NTS			
DEVELOPMENT APPLICATION			
CA 3138		for discussion	
Project no.	Drawing Phase.	Drawing No.	Rev



Existing Condition



Proposed Condition

Notes
All dimensions and setbacks to be verified prior to commencement, omissions or discrepancies to be notified to the architect.

Copyright
The copyright of this drawing together with any other documents prepared by crone partners architecture studios. pty ltd (cp) remains the property of cp. crone partners grants licence for the use of this document for the purpose for which they are intended. The licence is not transferable without the permission of cp.

Quality Assurance System

Authorised By: ADDate: 02.11.14

KEY

Description:
View looking West to Homebush Bay from Ground of apartment 33A Shoreline Drive (previously known as 10-16 Marquet Street)

Disclaimer:
This is a simulated montage of likely view impacts from the property numbers indicated on each sheet. The views are based on photographic and 3D digital model information and are intended to give an impression of the scale and massing of the proposed Community Facilities. Crone Partners accept no responsibility for the accuracy of these images. The images have been prepared to indicate scale and mass but do not show proposed future roadworks or accurate landscape design/species or building and public domain materiality.

Rev	DESCRIPTION	By	Date
Client			
Structural Engineer TAYLOR THOMSON WHITTING Level 3, 48 Chandos Street, St Leonards NSW 2065 Ph: (+612) 94397288		Service Consultant WOOD AND GRIEVE ENGINEERS L6, Building B, 207 Pacific Highway, St Leonards, New South Wales, 2065 Ph: (+612) 94547000	
ESD Consultant CRONE PARTNERS Level 2, 364 Kent Street Sydney, NSW 2000 Ph: (+612) 8295 5300		Landscape Architect URBIS Tower 2, Level 23, Darling Park, 201 Sussex St, Sydney, NSW 2000 Ph: (+612) 8233 9900	
Civil Engineer TAYLOR THOMSON WHITTING Level 3, 48 Chandos Street, St Leonards NSW 2065 Ph: (+612) 94397288		BCA Consultant CITY PLAN SERVICES Level 1, 364 Kent Street, Sydney, NSW 2000 Ph: (+612) 8270 3500	
Cost Consultant MITCHELL BRANDTMAN Unit 10, 15-23 Kumulla Rd Miranda, NSW 2228 Ph: (+612) 95418000		Planning Consultant URBIS Tower 2, Level 23, Darling Park, 201 Sussex St, Sydney, NSW 2000 Ph: (+612) 8233 9900	

Architect

cronepartners

Crone Partners
level 2, 364 Kent street,
sydney, nsw 2000, australia
Ph: +61 2 8295 5300
Fax: +61 2 8295 5301

Project
RHODES COMMUNITY FACILITIES AND RESTAURANT

30 Shoreline Drive, Rhodes 2138

Drawn: ADChecked: ADDate: 02/11/14Scale As indicated

Drawing Title
VIEW IMPACT ASSESMENT
Ground Floor - 33A Shoreline Drive

Scale Bar: NTS

DEVELOPMENT APPLICATION

CA 3138for discussion

Project no. Drawing Phase. Drawing No. Rev



Existing Condition



Proposed Condition

Notes

All dimensions and setbacks to be verified prior to commencement, omissions or discrepancies to be notified to the architect.

Copyright

The copyright of this drawing together with any other documents prepared by crone partners architecture studios. pty ltd (cp) remains the property of cp. crone partners grants licence for the use of this document for the purpose for which they are intended. The licence is not transferable without the permission of cp.

Quality Assurance System

Authorised By: AD

Date: 02.11.14

KEY

Description:

View looking West to Homebush Bay from Level 1 of apartment 33A Shoreline Drive (previously known as 10-16 Marquet Street)

Disclaimer:

This is a simulated montage of likely view impacts from the property numbers indicated on each sheet. The views are based on photographic and 3D digital model information and are intended to give an impression of the scale and massing of the proposed Community Facilities. Crone Partners accept no responsibility for the accuracy of these images. The images have been prepared to indicate scale and mass but do not show proposed future roadworks or accurate landscape design/species or building and public domain materiality.

Rev	DESCRIPTION	By	Date
Client			
Structural Engineer	TAYLOR THOMSON WHITTING Level 3, 48 Chandos Street, St Leonards NSW 2065 Ph: (+612) 94397288	Service Consultant	WOOD AND GRIEVE ENGINEERS L6, Building B, 207 Pacific Highway, St Leonards, New South Wales, 2065 Ph: (+612) 94847000
ESD Consultant	CRONE PARTNERS Level 2, 364 Kent Street Sydney, NSW 2000 Ph: (+612) 8295 5300	Landscape Architect	URBIS Tower 2, Level 23, Darling Park, 201 Sussex St, Sydney, NSW 2000 Ph: (+612) 8233 9900
Civil Engineer	TAYLOR THOMSON WHITTING Level 3, 48 Chandos Street, St Leonards NSW 2065 Ph: (+612) 94397288	BCA Consultant	CITY PLAN SERVICES Level 1, 364 Kent Street, Sydney, NSW 2000 Ph: (+612) 8270 3500
Cost Consultant	MITCHELL BRANDTMAN Unit 10, 15-23 Kumulla Rd Miranda, NSW 2228 Ph: (+612) 95418000	Planning Consultant	URBIS Tower 2, Level 23, Darling Park, 201 Sussex St, Sydney, NSW 2000 Ph: (+612) 8233 9900

Architect

cronepartners

Crone Partners
level 2, 364 Kent street,
sydney, nsw 2000, australia
Ph: +61 2 8295 5300
Fax: +61 2 8295 5301

Project

RHODES COMMUNITY FACILITIES AND RESTAURANT

30 Shoreline Drive, Rhodes 2138

Drawn: AD	Checked: AD	Date: 02/11/4	Scale As indicated
-----------	-------------	---------------	--------------------

Drawing Title

VIEW IMPACT ASSESMENT

Level 1 - 33A Shoreline Drive

Scale Bar: NTS

DEVELOPMENT APPLICATION

CA 3138

for discussion

Project no.	Drawing Phase.	Drawing No.	Rev
-------------	----------------	-------------	-----



Existing Condition



Proposed Condition

Notes

All dimensions and setouts to be verified prior to commencement, omissions or discrepancies to be notified to the architect.

Copyright

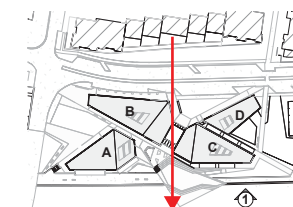
The copyright of this drawing together with any other documents prepared by crone partners architecture studios, pty ltd (cp) remains the property of cp. crone partners grants licence for the use of this document for the purpose for which they are intended. The licence is not transferable without the permission of cp.

Quality Assurance System

Authorised By: AD

Date: 02.11.14

KEY



Description:

View looking West to Homebush Bay from Level 2 of apartment 33A
Shoreline Drive (previously known as 10-16 Marquet Street)

Disclaimer:

This is a simulated montage of likely view impacts from the property numbers indicated on each sheet. The views are based on photographic and 3D digital model information and are intended to give an impression of the scale and massing of the proposed Community Facilities. Crone Partners accept no responsibility for the accuracy of these images. The images have been prepared to indicate scale and mass but do not show proposed future roadworks or accurate landscape design/species or building and public domain materiality.

Rev	DESCRIPTION	By	Date
-----	-------------	----	------

Client



<p>Structural Engineer TAYLOR THOMSON WHITTING Level 3, 48 Chandos Street, St Leonards NSW 2065 Ph: (+612) 94397288</p>	<p>Service Consultant WOOD AND GRIEVE ENGINEERS L6, Building B, 207 Pacific Highway, St Leonards, New South Wales, 2065 Ph: (+612) 84847000</p>
<p>ESD Consultant CRONE PARTNERS Level 2, 364 Kent Street Sydney, NSW Ph: (+612) 8295 5300</p>	<p>Landscape Architect URBIS Tower 2, Level 23, Darling Park, 2011 Sussex St, Sydney, NSW 2000 Ph: (+612) 8233 9900</p>
<p>Civil Engineer TAYLOR THOMSON WHITTING Level 3, 48 Chandos Street, St Leonards NSW 2065 Ph: (+612) 94397288</p>	<p>BGA Consultant CITY PLAN SERVICES Level 1, 364 Kent Street, Sydney, NSW 2000 Ph: (+612) 8270 3500</p>
<p>Cost Consultant MITCHELL BRANDTMAN Unit 10, 15 - 23 Kurnell Rd Miranda NSW 2228 Ph: (+612) 95418000</p>	<p>Planning Consultant URBIS Tower 2, Level 23, Darling Park, 2011 Sussex St, Sydney, NSW 2000 Ph: (+612) 8233 9900</p>

Architect

cronepartners

Crone Partners
level 2, 364 kent street,
sydney, nsw 2000, australia
Ph: +61 2 8295 5300
Fax: +61 2 8295 5301

Project
RHODES COMMUNITY FACILITIES AND
RESTAURANT

30 Shoreline Drive, Rhodes 2138

Drawn: AD	Checked: AD	Date: 02/11/14	Scale As indicated
-----------	-------------	----------------	--------------------

Drawing Title

VIEW IMPACT ASSESSMENT
Level 2 - 33A Shoreline Drive

Level 2 - 33A Shoreline Drive

Scale Bar: NTS

DEVELOPMENT APPLICATION

CA 3138	for discussion		
Project no.	Drawing Phase.	Drawing No.	Rev



Existing Condition



Proposed Condition

Notes
All dimensions and setbacks to be verified prior to commencement, omissions or discrepancies to be notified to the architect.

Copyright
The copyright of this drawing together with any other documents prepared by crone partners architecture studios. pty ltd (cp) remains the property of cp. crone partners grants licence for the use of this document for the purpose for which they are intended. The licence is not transferable without the permission of cp.

Quality Assurance System

Authorised By: ADDate: 02.11.14

KEY

Description:
View looking West to Homebush Bay from Ground of apartment 39 Shoreline Drive (previously known as 10-16 Marquet Street)

Disclaimer:
This is a simulated montage of likely view impacts from the property numbers indicated on each sheet. The views are based on photographic and 3D digital model information and are intended to give an impression of the scale and massing of the proposed Community Facilities. Crone Partners accept no responsibility for the accuracy of these images. The images have been prepared to indicate scale and mass but do not show proposed future roadworks or accurate landscape design/species or building and public domain materiality.

Rev	DESCRIPTION	By	Date

Client

<p>Structural Engineer TAYLOR THOMSON WHITTING Level 3, 48 Chandos Street, St Leonards NSW 2065 Ph: (+612) 94397288</p>	<p>Service Consultant WOOD AND GRIEVE ENGINEERS L6, Building B, 207 Pacific Highway, St Leonards, New South Wales, 2065 Ph: (+612) 94847000</p>
<p>ESD Consultant CRONE PARTNERS Level 2, 364 Kent Street Sydney, NSW 2000 Ph: (+612) 8295 5300</p>	<p>Landscape Architect URBIS Tower 2, Level 23, Darling Park, 201 Sussex St, Sydney, NSW 2000 Ph: (+612) 8233 9900</p>
<p>Civil Engineer TAYLOR THOMSON WHITTING Level 3, 48 Chandos Street, St Leonards NSW 2065 Ph: (+612) 94397288</p>	<p>BCA Consultant CITY PLAN SERVICES Level 1, 364 Kent Street, Sydney, NSW 2000 Ph: (+612) 8270 3500</p>
<p>Cost Consultant MITCHELL BRANDTMAN Unit 10, 15-23 Kumulla Rd Miranda, NSW 2228 Ph: (+612) 95418000</p>	<p>Planning Consultant URBIS Tower 2, Level 23, Darling Park, 201 Sussex St, Sydney, NSW 2000 Ph: (+612) 8233 9900</p>

Architect

cronepartners

Crone Partners
level 2, 364 Kent street,
sydney, nsw 2000, australia
Ph: +61 2 8295 5300
Fax: +61 2 8295 5301

Project
RHODES COMMUNITY FACILITIES AND RESTAURANT

30 Shoreline Drive, Rhodes 2138

Drawn: ADChecked: ADDate: 02/11/14Scale As indicated

Drawing Title
VIEW IMPACT ASSESMENT
Ground Floor - 39 Shoreline Drive

Scale Bar: NTS

DEVELOPMENT APPLICATION

CA 3138for discussion

Project no. Drawing Phase. Drawing No. Rev



Existing Condition



Proposed Condition

Notes

All dimensions and setbacks to be verified prior to commencement, omissions or discrepancies to be notified to the architect.

Copyright

The copyright of this drawing together with any other documents prepared by crone partners architecture studios. pty ltd (cp) remains the property of cp. crone partners grants licence for the use of this document for the purpose for which they are intended. The licence is not transferable without the permission of cp.

Quality Assurance System

Authorised By: ADDate: 02.11.14

KEY

Description:

View looking West to Homebush Bay from Level 1 of apartment 39 Shoreline Drive (previously known as 10-16 Marquet Street)

Disclaimer:

This is a simulated montage of likely view impacts from the property numbers indicated on each sheet. The views are based on photographic and 3D digital model information and are intended to give an impression of the scale and massing of the proposed Community Facilities. Crone Partners accept no responsibility for the accuracy of these images. The images have been prepared to indicate scale and mass but do not show proposed future roadworks or accurate landscape design/species or building and public domain materiality.

Rev	DESCRIPTION	By	Date

Client

<p>Structural Engineer</p> <p>TAYLOR THOMSON WHITTING</p> <p>Level 3, 48 Chandos Street, St Leonards NSW 2065 Ph: (+612) 94397288</p>	<p>Service Consultant</p> <p>WOOD AND GRIEVE ENGINEERS</p> <p>L6, Building B, 207 Pacific Highway, St Leonards, New South Wales, 2065 Ph: (+612) 94847000</p>
<p>ESD Consultant</p> <p>CRONE PARTNERS</p> <p>Level 2, 364 Kent Street Sydney, NSW 2000 Ph: (+612) 8295 5300</p>	<p>Landscape Architect</p> <p>URBIS</p> <p>Tower 2, Level 23, Darling Park, 201 Sussex St, Sydney, NSW 2000 Ph: (+612) 8233 9900</p>
<p>Civil Engineer</p> <p>TAYLOR THOMSON WHITTING</p> <p>Level 3, 48 Chandos Street, St Leonards NSW 2065 Ph: (+612) 94397288</p>	<p>BCA Consultant</p> <p>CITY PLAN SERVICES</p> <p>Level 1, 364 Kent Street, Sydney, NSW 2000 Ph: (+612) 8270 3500</p>
<p>Cost Consultant</p> <p>MITCHELL BRANDTMAN</p> <p>Unit 10, 15-23 Kumulla Rd Miranda, NSW 2228 Ph: (+612) 95418000</p>	<p>Planning Consultant</p> <p>URBIS</p> <p>Tower 2, Level 23, Darling Park, 201 Sussex St, Sydney, NSW 2000 Ph: (+612) 8233 9900</p>

Architect

cronepartners

Crone Partners
level 2, 364 kent street,
sydney, nsw 2000, australia
Ph: +61 2 8295 5300
Fax: +61 2 8295 5301

Project

RHODES COMMUNITY FACILITIES AND RESTAURANT

30 Shoreline Drive, Rhodes 2138

Drawn: ADChecked: ADDate: 02/11/14Scale As indicated

Drawing Title

VIEW IMPACT ASSESMENT

Level 1 - 39 Shoreline Drive

Scale Bar: NTS

DEVELOPMENT APPLICATION

CA 3138for discussion

Project no.Drawing Phase.Drawing No.Rev



Existing Condition



Proposed Condition

Notes
All dimensions and setbacks to be verified prior to commencement, omissions or discrepancies to be notified to the architect.

Copyright
The copyright of this drawing together with any other documents prepared by crone partners architecture studios. pty ltd (cp) remains the property of cp. crone partners grants licence for the use of this document for the purpose for which they are intended. The licence is not transferable without the permission of cp.

Quality Assurance System

Authorised By: ADDate: 02.11.14

KEY

Description:
View looking West to Homebush Bay from Level 2 of apartment 39 Shoreline Drive (previously known as 10-16 Marquet Street)

Disclaimer:
This is a simulated montage of likely view impacts from the property numbers indicated on each sheet. The views are based on photographic and 3D digital model information and are intended to give an impression of the scale and massing of the proposed Community Facilities. Crone Partners accept no responsibility for the accuracy of these images. The images have been prepared to indicate scale and mass but do not show proposed future roadworks or accurate landscape design/species or building and public domain materiality.

Rev	DESCRIPTION	By	Date
Client			
Structural Engineer TAYLOR THOMSON WHITTING Level 3, 48 Chandos Street, St Leonards NSW 2065 Ph: (+612) 94397288		Service Consultant WOOD AND GRIEVE ENGINEERS L6, Building B, 207 Pacific Highway, St Leonards, New South Wales, 2065 Ph: (+612) 94947000	
ESD Consultant CRONE PARTNERS Level 2, 364 Kent Street Sydney, NSW 2000 Ph: (+612) 8295 5300		Landscape Architect URBIS Tower 2, Level 23, Darling Park, 201 Sussex St, Sydney, NSW 2000 Ph: (+612) 8233 9900	
Civil Engineer TAYLOR THOMSON WHITTING Level 3, 48 Chandos Street, St Leonards NSW 2065 Ph: (+612) 94397288		BCA Consultant CITY PLAN SERVICES Level 1, 364 Kent Street, Sydney, NSW 2000 Ph: (+612) 8270 3500	
Cost Consultant MITCHELL BRANDTMAN Unit 10, 15-23 Kumulla Rd Miranda, NSW 2228 Ph: (+612) 95418000		Planning Consultant URBIS Tower 2, Level 23, Darling Park, 201 Sussex St, Sydney, NSW 2000 Ph: (+612) 8233 9900	

Architect

cronepartners

Crone Partners
level 2, 364 Kent street,
sydney, nsw 2000, australia
Ph: +61 2 8295 5300
Fax: +61 2 8295 5301

Project
RHODES COMMUNITY FACILITIES AND RESTAURANT

30 Shoreline Drive, Rhodes 2138

Drawn: ADChecked: ADDate: 02/11/14Scale As indicated

Drawing Title
VIEW IMPACT ASSESMENT
Level 2 - 39 Shoreline Drive

Scale Bar: NTS

DEVELOPMENT APPLICATION

CA 3138for discussion

Project no. Drawing Phase. Drawing No. Rev